



For more information, contact:
Family Service Rochester
1110 Sixth Street NW
Rochester, MN 55901

P 507.287.2010
F 507.287.7805

office@familyservicerochester.org
www.familyservicerochester.org

A green graphic of a playhouse roof with a chimney on the left side, positioned above the text.

once upon a
playhouse

Benefitting family violence
prevention programs



Solutions for Family Violence

**10,000,000
Children**

are exposed to domestic violence every year.

**More than 23
Minnesotans Died**

last year due to domestic violence. Over 19 children were left without a mother because of a domestic violence murder.

1 in 4 women

will be the victims of severe violence by a domestic partner in their lifetime.

Men who were exposed to violence as a child are

4 times

more likely to perpetrate violence with a domestic partner.

How Can You Help?

Family Service Rochester addresses violence in a number of ways, working with victims as well as offenders. All of the services Family Service Rochester provides are offered on an ability to pay basis. We go the extra mile to remove barriers and make sure people can access the help they need. We provide transportation to and from groups, refreshments, child care and kids programming.

We are able to provide services on an ability to pay basis and offer help with important things like child care because of the support we receive from the community. Funds raised through Once Upon a Playhouse are crucial to sustaining programming.

Please consider joining Family Service Rochester in addressing family violence by becoming a Once Upon a Playhouse sponsor. A variety of sponsorship opportunities are available, every donation helps.



Once Upon a Playhouse funds are crucial in our work addressing family violence.

Once Upon a Playhouse Sponsorship Opportunities

Supporter - \$250.

- Your name listed in Once Upon a Playhouse flyers at the Home Show
- Your name listed as a supporter on signage at playhouse area of the Home Show (total sign size is 2 feet by 3 feet – 3 signs total)
- Your name listed on the supporter section of Once Upon a Playhouse website
- Your name listed as supporter in Family Service Rochester e-newsletter (sent to approximately 2000 households).

Sponsor - \$500. Everything in Supporter PLUS

- Your name listed as a sponsor on flyers that are distributed prior to event
- Live link to your website on sponsor section of Once Upon a Playhouse website
- Facebook recognition (on Family Service Rochester page AND we post Thank You messages on your page)

Bronze - \$1,000. Everything in Sponsor with your logo (small) PLUS

- Your logo on event promotion posters (11x14 and 8.5 x 11) posted throughout the community
- Your name listed as a bronze sponsor on our marquee sign (high traffic corner of Civic Center Dr. and 11th Ave. NW)
- 2 Tickets to the Rochester Area Builders Home Show

Silver - \$2,500. Everything in Bronze with medium logo PLUS

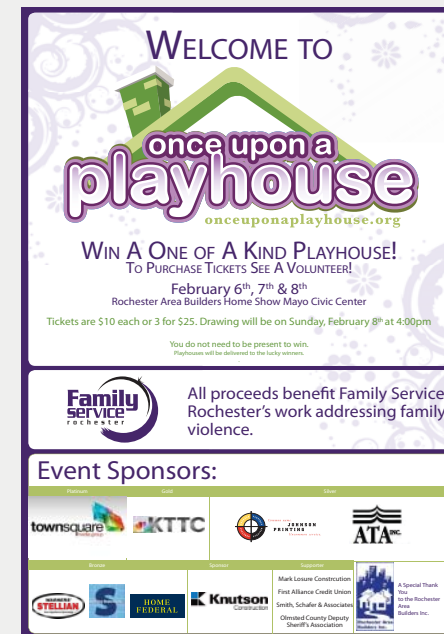
- Your name included in radio commercials (purchased and donated ads on Townsquare stations).
- Invitation to private tour of playhouse area before the Home Show opens

Gold - \$5,000. Everything in Silver with a large logo PLUS

- Your name listed on KTTC TV Commercials (purchased and donated ads)
- 4 Tickets to Rochester Area Builders Home Show
- Opportunity to spend an hour helping a builder work on a playhouse
- Opportunity to volunteer at Once Upon a Playhouse in company apparel

Platinum - \$10,000. Everything in Gold with the largest logo PLUS

- Your name tied to event title (i.e. Family Service Rochester and YOUR NAME present Once Upon a Playhouse).
- Logo and verbal recognition on KTTC TV Commercials
- 8 tickets to Rochester Area Builders Home Show
- Your materials on display at event welcome table (where participants purchase raffle tickets, ask questions, etc.)



Solutions for Family Violence

Family Service Rochester works with the entire family when violence occurs.

Each year we see hundreds of families at the Family Access Center, where we provide children a safe, neutral setting to maintain relationships with both parents. Children are protected from conflict between parents and able to focus on their own relationships with their mom and dad.

We build resiliency with women and children through domestic violence support and education groups. We begin with a light meal, then break into groups for both women and children, where they develop safety plans, build self esteem and deal with trauma.

We also work with men who have been violent. Project Restore helps men understand the cycle of violence, identify triggers and find ways to cope in non-violent ways.

All services are offered on an ability to pay basis – no one is ever turned away because they cannot pay for the services they need.

How Family Service Rochester Partners with Families

Family Service Rochester works with families who have experienced violence by partnering with them to achieve the goals they set. By identifying and drawing on individual and family strengths, Family Service Rochester has produced tremendous results. For example, over 90% of men graduating from Project Restore (our domestic violence program for men) have a 0% re-occurrence rate! And because of how we partner with people, half of the men in Project Restore enroll voluntarily.

The Family Access Center focuses on the needs of children to maintain relationships with their parents. Annually hundreds of children experience positive parenting times they may not otherwise have.

Women and children are given tools and support to set personal goals, make affirming relationship decisions and keep themselves safe.

Check out a few of our Past Playhouses

